

POMEAS Microscope PMS-XHD-AF Series:

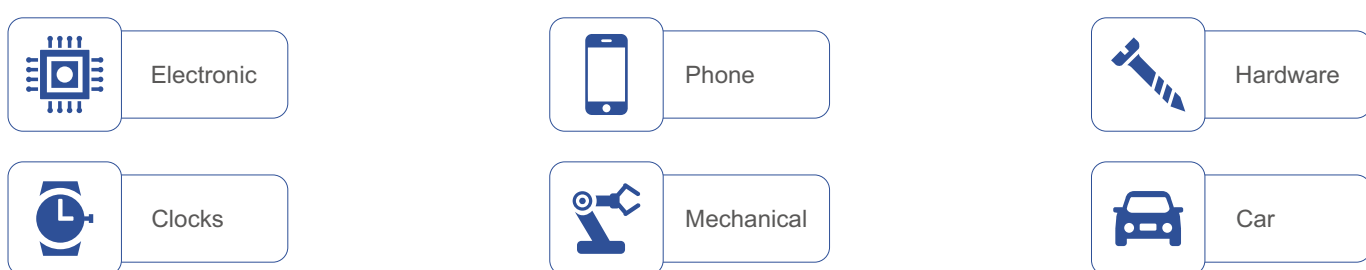
An auto focus video microscope with measurement function and USB output.



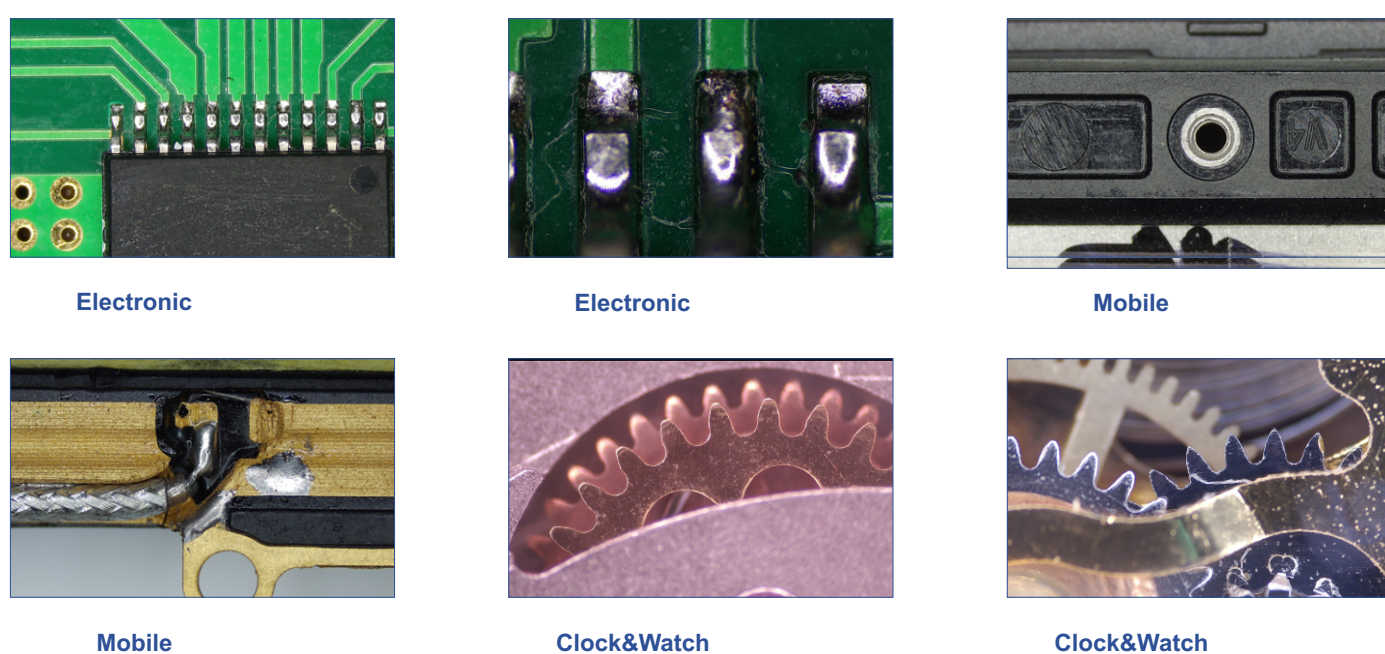
Product Introduction

Video microscope, no need to use eyepiece, can inspect items on the screen. The new microscope is with beautiful all in one mechanical design shape, self-developed high performance optical system. The main functions includes continue zooming, automatic focusing, dimension measurement, switchable illumination, etc. It can also save high quality color static image, dynamic video via USB port.

Application Field



Case

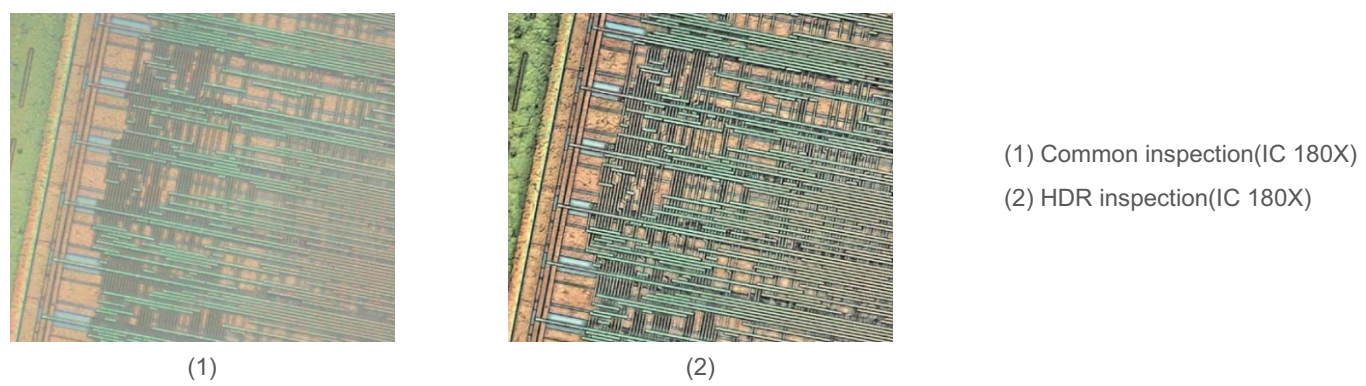


Product Advantage

Faster work speed: No eyepiece required; Automatic focusing; Continues zooming.



Capture more detail: HDR enhanced, image more distinct; Electronic magnification up to 180X; 2MP camera, 60FPS image capture.



More convenient: Double USB interface, can save static image/dynamic video; Simple and easy human-computer operation software, with measurement function; Provide multiple lightings.



Microscope series		Product Parameter
Type	Item	Specification
Parameter	Model	PMS-XHD-AF
	Size	320×308.5×417.5mm
	Object Size	Height Max: 50mm
Optical Parameter	System Optical Magnification	MIN.: 29.92X(can enlarge to 179.5X on screen) MAX.: 192.34(can enlarge to 1154X on screen)
	Optical Magnification	0.35X~2.25X
	Monitor	21.5 inches
	Resolution	MIN.: <8.77μm MAX.: <3.94μm
	Working Distance	88±2mm
	FOV(D×H×V)mm	MIN.: 18.3×15.9×8.95 MAX.: 2.84×2.47×1.39
	Accessory	0.75X Object Lens
Camera Parameter	Sensor	CMOS color
	Pixel	2MP (1920×1080)
	Sensor Size	1/2.8"
	Menu	POEMAS Software
	Operation Type	USB Mouse/Controller
	Output Type	HDMI
	White Balance	Auto/Manual/Once
	Exposure Type	Auto/Manual
	Display FPS	1080P@60FPS
	Scanning Type	Progressive Scan
	Electronic Shutter Speed	1/50S (1/60S~1/10000S)
	Working Temperature	0°C~50°C
	Digital Zoom	Support
	Storage Type	USB
Measurement Function	Point, Line, Circle, Arc.etc.	
Instrument Configuration	Illumination Optional	LED Light
	Accessory Optional	Calibration Plate