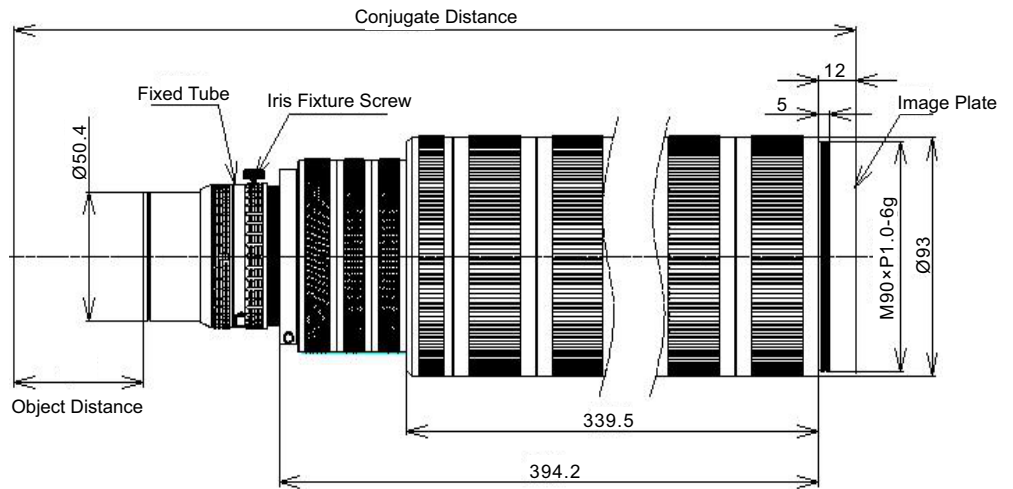


PMS-LLD200-14640M

Description



※ The max. sensor Φ82mm image, ultra-low distortion, shock-proof design, Standard Mag. range 1.75X ~2.25X.

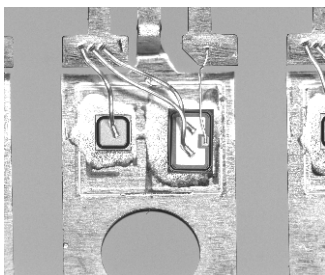
PMS-LLD200-14640M

Parameters

Code	PMS-LLD200-14640M		
Max. FOV (mm)	Ø82		
Resolution (µm)	5		
Standard Mag. (X)	1.75	2.0	2.25
Aperture	4.0~16		
Focus (mm)	146		
Distortion	<0.002%		
Relative Illumination	90%		
Working Distance (mm)	179	168.8	154.3
Conjugate Distance (mm)	606	632	690
Mount	M72-Mount		

PMS-LLD200-14640M

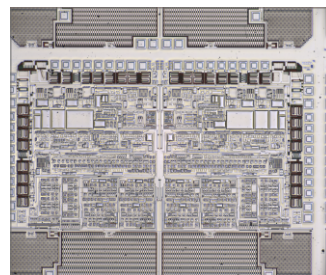
Product Case



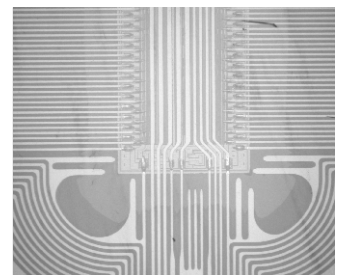
Defect Detection



Surface Pattern And Color Detection



PCB Defect Detection



PCB Detection

