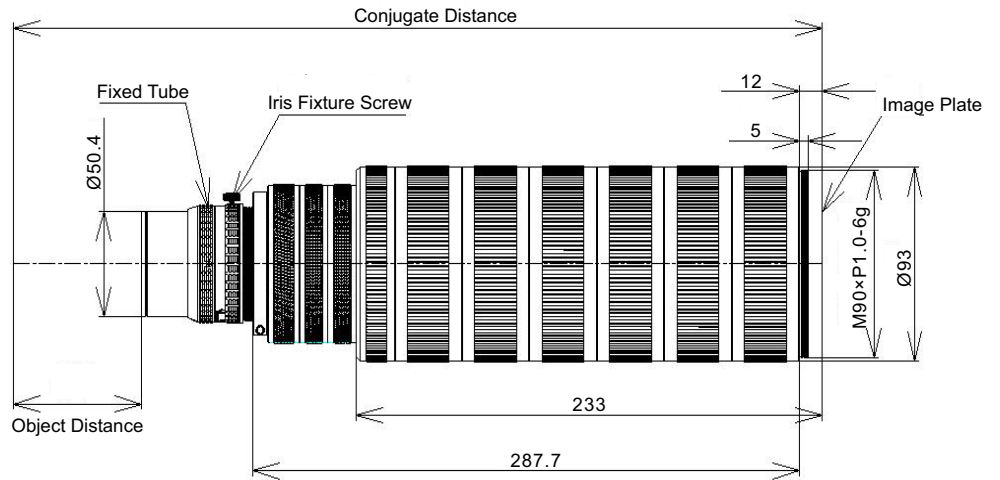


PMS-LLD133-14640M

Description



※ The max. sensor $\varnothing 82$ mm image, ultra-low distortion, shock-proof design, Standard Mag. range 1.2X ~ 1.5X.

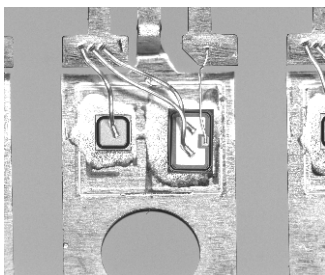
PMS-LLD133-14640M

Parameters

Code	PMS-LLD133-14640M		
Max. FOV (mm)	$\varnothing 82$		
Resolution (μm)	5		
Standard Mag. (X)	1.2	1.33	1.5
Aperture	F/N.4.0~16		
Focus (mm)	146		
Distortion	<0.002%		
Relative Illumination	90%		
Working Distance (mm)	216	204	192
Conjugate Distance (mm)	567	574	586
Mount	M72-Mount		

PMS-LLD133-14640M

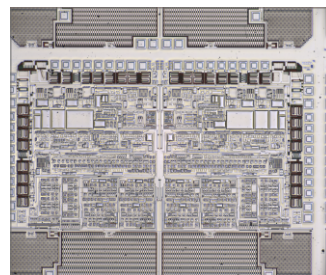
Product Case



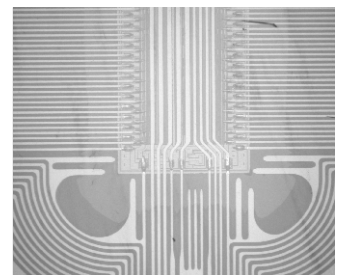
Defect Detection



Surface Pattern And Color Detection



PCB Defect Detection



PCB Detection

