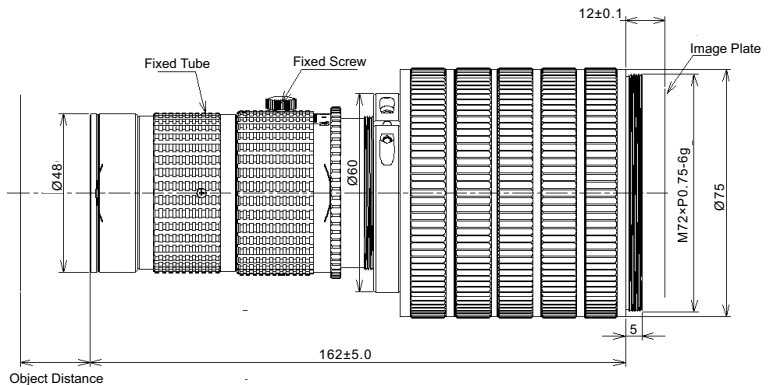
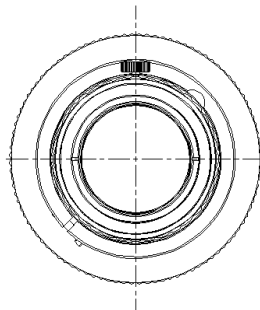


**PMS-LLD075-8040M**

**Description**



※ The max. sensor  $\Phi 64\text{mm}$  image, ultra-low distortion, shock-proof design, Standard Mag. range 0.63X ~ 0.9X.

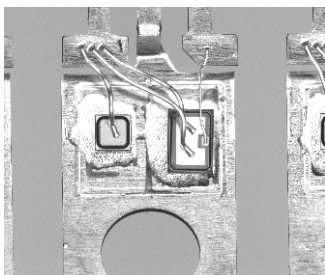
**PMS-LLD075-8040M**

**Parameters**

Code	PMS-LLD075-8040M		
Max. FOV (mm)	$\Phi 64$		
Resolution ( $\mu\text{m}$ )	5/7		
Standard Mag. (X)	0.63	0.75	0.9
Aperture	4.0~16		
Focus (mm)	80		
Distortion	<0.05%		
Relative Illumination	90%		
Working Distance (mm)	190	170	153
Conjugate Distance (mm)	365	354	349
Mount	M72/F-Mount		

**PMS-LLD075-8040M**

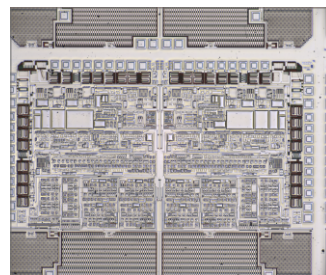
**Product Case**



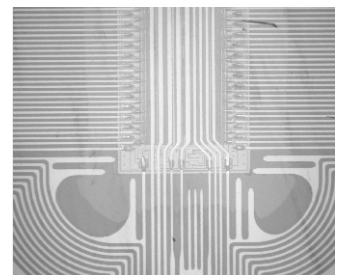
Defect Detection



Surface Pattern And Color Detection



PCB Defect Detection



PCB Detection

