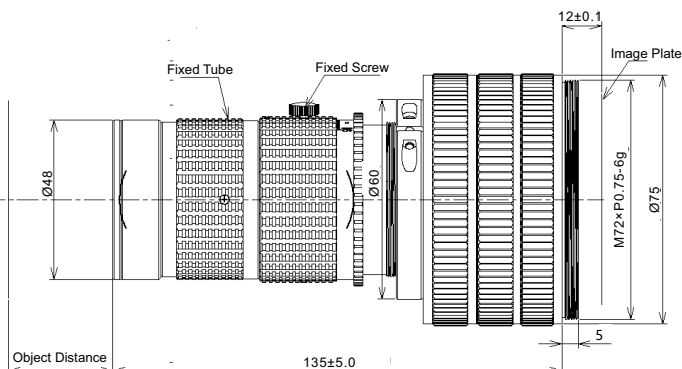
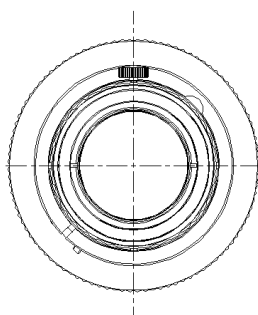


PMS-LLD050-8040M

Description



※ The max. sensor Φ64mm image, ultra-low distortion, shock-proof design, Standard Mag. range 0.35X ~ 0.63X.

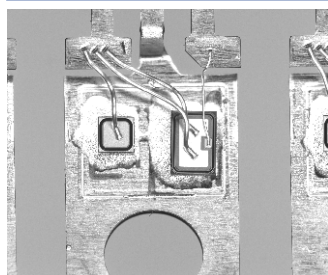
PMS-LLD050-8040M

Parameters

Code	PMS-LLD050-8040M		
Max. FOV (mm)	Ø64		
Resolution (µm)	5/7		
Standard Mag. (X)	0.35	0.5	0.63
Aperture	4.0~16		
Focus (mm)	80		
Distortion	<0.05%		
Relative Illumination	85%		
Working Distance (mm)	293	225	192
Conjugate Distance (mm)	446	391	368
Mount	M72/F-Mount		

PMS-LLD050-8040M

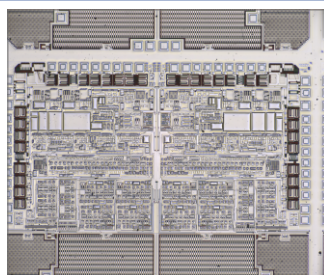
Product Case



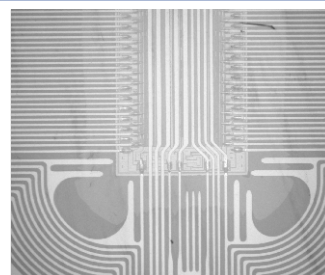
Defect Detection



Surface Pattern And Color Detection



PCB Defect Detection



PCB Detection

