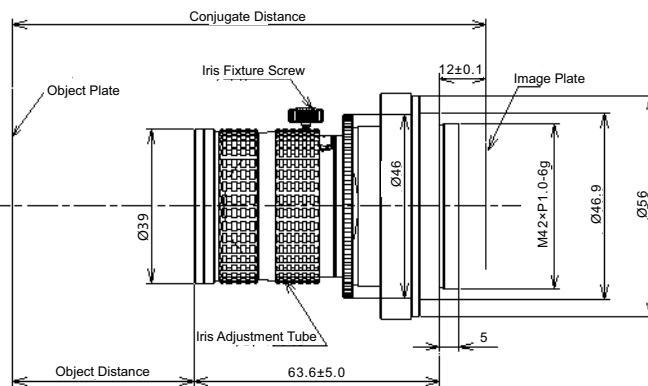
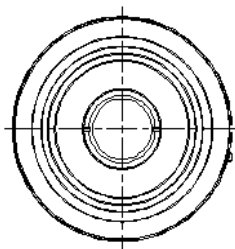


PMS-LLD050-3528M

Description



※ The max. sensor Φ32mm image, ultra-low distortion, shock-proof design, Standard Mag. range 0.3X ~ 0.7X.

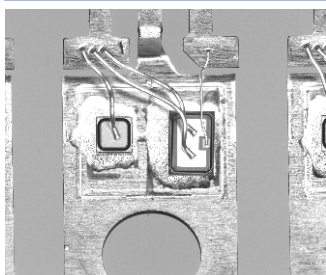
PMS-LLD050-3528M

Parameters

Code	PMS-LLD050-3528M		
Max. FOV (mm)	Ø32		
Resolution (µm)	7		
Standard Mag. (X)	0.3	0.5	0.7
Aperture	2.8~16		
Focus (mm)	35		
Distortion	<0.03%		
Relative Illumination	65%		
Working Distance (mm)	123	84	63
Conjugate Distance (mm)	202	169	155
Mount	M42/M72/F-Mount		

PMS-LLD050-3528M

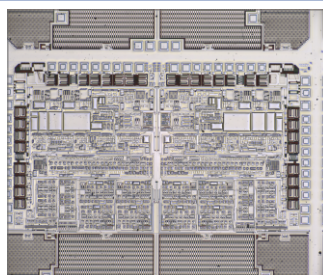
Product Case



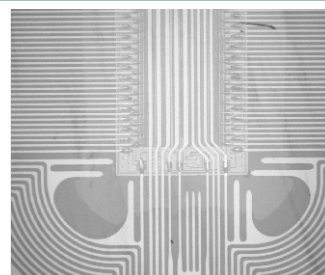
Defect Detection



Surface Pattern And Color Detection



PCB Defect Detection



PCB Detection

