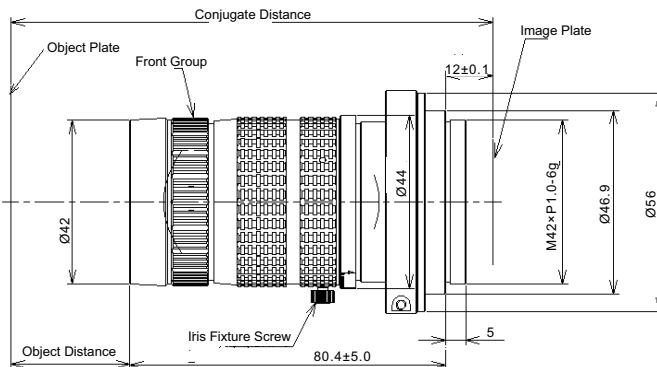
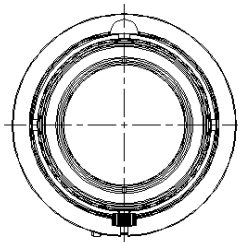


PMS-LLD003-2540M

Description



※ The max. sensor Φ32mm image, ultra-low distortion, shock-proof design, Standard Mag. range 0.015~0.05X.

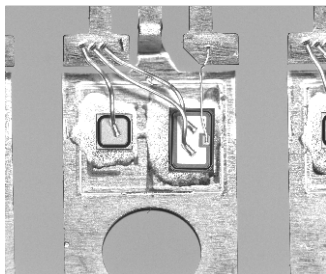
PMS-LLD003-2540M

Parameters

Code	PMS-LLD003-2540M		
Max. FOV (mm)	Ø32		
Resolution (µm)	7		
Standard Mag. (X)	0.015	0.03	0.05
Aperture	4.0~16		
Focus (mm)	25		
Distortion	<0.1%		
Relative Illumination	65%		
Working Distance (mm)	1740	870	520
Conjugate Distance (mm)	1826.4	952	607.3
Mount	M42/M72-Mount		

PMS-LLD003-2540M

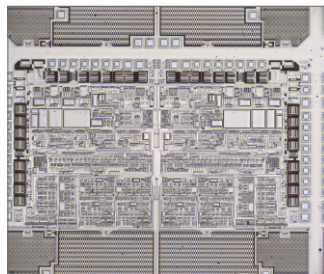
Product Case



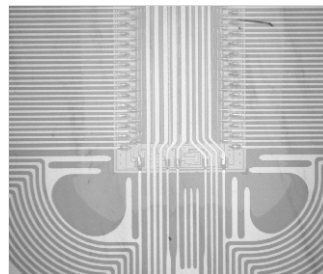
Defect Detection



Surface Pattern And Color Detection



PCB Defect Detection



PCB Detection

