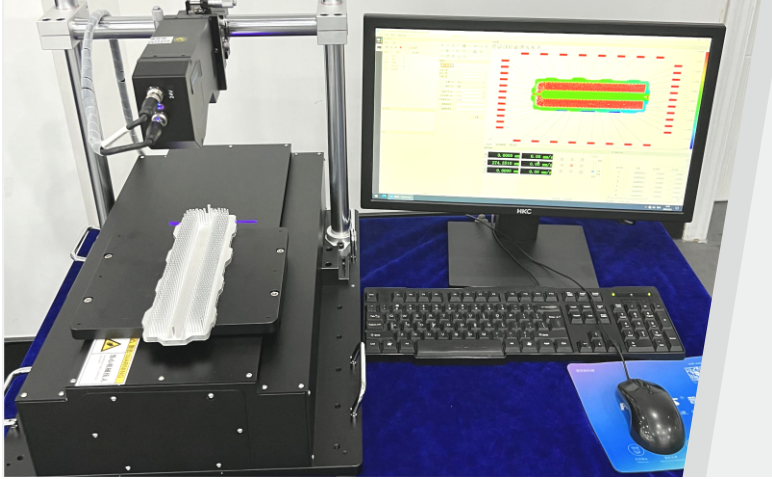


APPLICATION CASE

Line Laser Displacement Sensor



Line Laser Displacement Sensor

PMS-L4000

High accuracy and simultaneous measurement of multiple dimensions on a contour

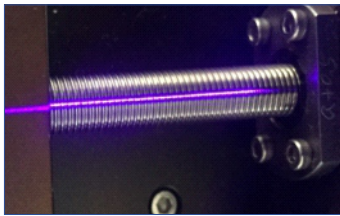
Product Advantage:

- ◆ Fast, accurate, non-contact, easy to install, simultaneous measurement of multiple dimensions on a contour
- ◆ Realize the measurement of any contour line dimension of the object, such as height difference, width, angle, radius, etc. It can also realize the defect detection, appearance dimension scanning, surface feature tracking and other functions.

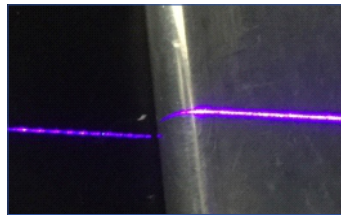
This product has passed ISO9001 certification, European CE certification, RoHS certification, U.S. FDA certification, Japan JQA certification.

Application Area:

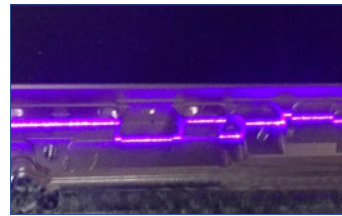
- ◆ Automotive industry, such as: automotive assembly position and gap inspection, automotive handle surface inspection, tire inspection, complex contour size inspection, etc.
- ◆ Cell phone industry, such as: cell phone panel assembly alignment, cell phone component size inspection, cell phone screen thickness inspection, cell phone indicates curved surface measurement, etc.
- ◆ Semiconductor industry, such as: PCB board inspection, electronic components height, width, angle detection, IC pin spacing and skew measurement, etc.
- ◆ Hardware industry, such as: gear jamming alignment detection, gear pitch detection, bearing height detection, etc.



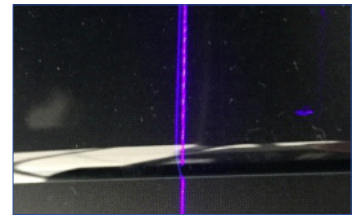
Measurement of screw tooth pitch



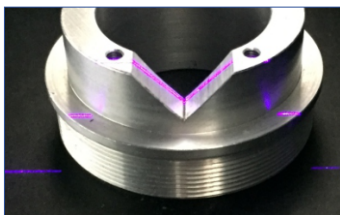
Surface curvature measurement



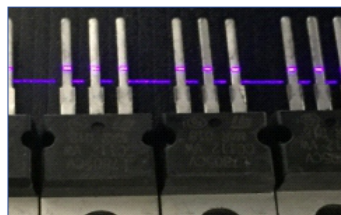
Complex Contour Dimension Measurement



Curved Glass Measurement



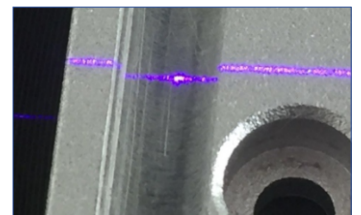
Height, width, angle measurement



Electronic Device Pin Pitch and Bend Measurement



Assembly Dimension Measurement



Hardware Mold Measurement

