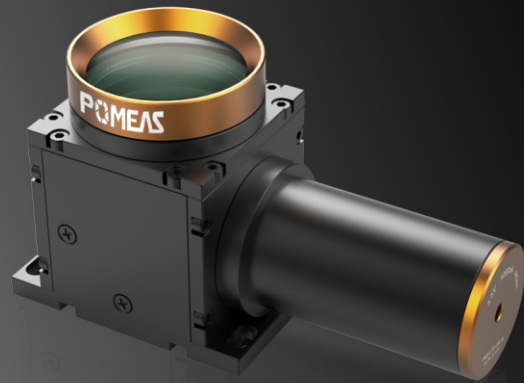


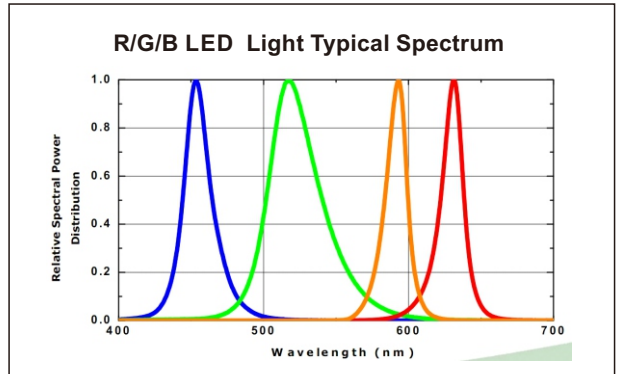
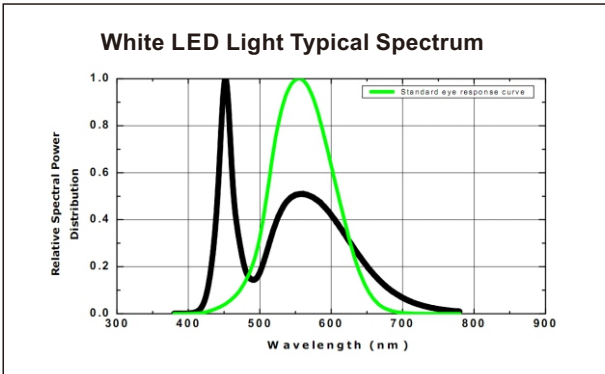
**Telecentric Parallel Illumination Series**

**PMS-LTD60L**

1. Telecentric parallel LED illumination is specially designed for telecentric lens
2. Enhance contrast ration of object's edge in the inspection system
3. Utmost to accomplish a nature deep of field and telecentricity of telecentric lens.



<b>Code</b>	PMS-LTD60L		
<b>Beam Diameter</b>	60mm		
<b>Dimension Size</b>	<b>Length</b>	171.5mm	
	<b>Width</b>	73mm	
	<b>Height</b>	92mm	
<b>Optional Color</b>	Red/green/blue/white		
<b>Forward Voltage</b>	3.5V		
<b>Forward Current</b>	350mA		



<b>Unit : mm</b>	<b>Scale</b>	<b>1:1</b>
	<b>Name</b>	<b>PMS-LTD60L</b>
	<b>Date</b>	<b>2012.9.13</b>
<b>POMEAS</b>		