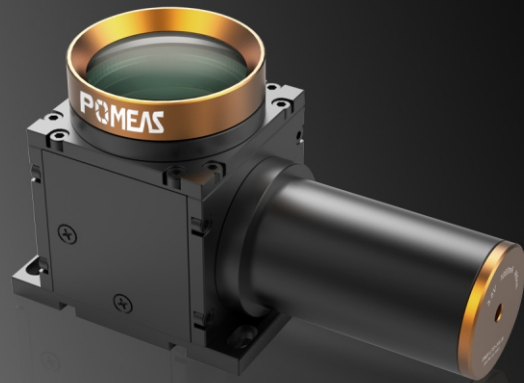


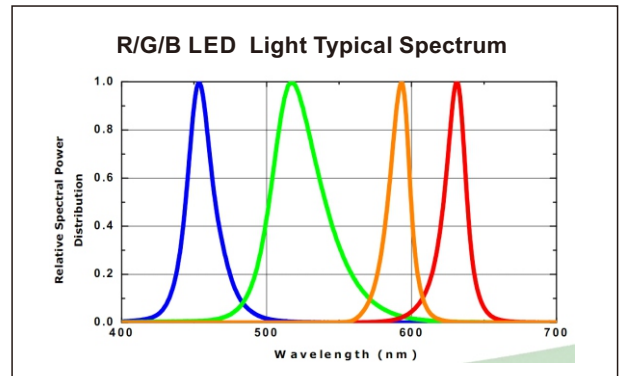
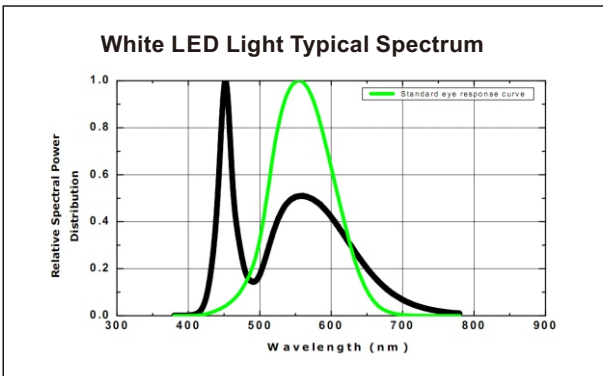
Telecentric Parallel Illumination Series

PMS-LTD30L

1. Telecentric parallel LED illumination is specially designed for telecentric lens
2. Enhance contrast ration of object's edge in the inspection system
3. Utmost to accomplish a nature deep of field and telecentricity of telecentric lens.



Code	PMS-LTD30L		
Beam Diameter	35mm		
Dimension Size	Length	111.5mm	
	Width	45mm	
	Height	62.39mm	
Optional Color	Red/green/blue/white		
Forward Voltage	3.5V		
Forward Current	350mA		



Unit : mm	Scale	1:1
	Name	PMS-LTD30L
	Date	2012.9.13
POMEAS		