

## Pomeas TTC Standard Telecentric Lens Series

### PMS-05TTC1422

1. Support 1MP camera or below
2. Low distortion, high telecentricity and deep depth of field, more suitable for high precision positioning and measuring
3. Telecentric design
4. Support 2/3" sensor
5. Standard C-Mount



Max.Sensor Size  
2/3"

Magnification  
0.47X

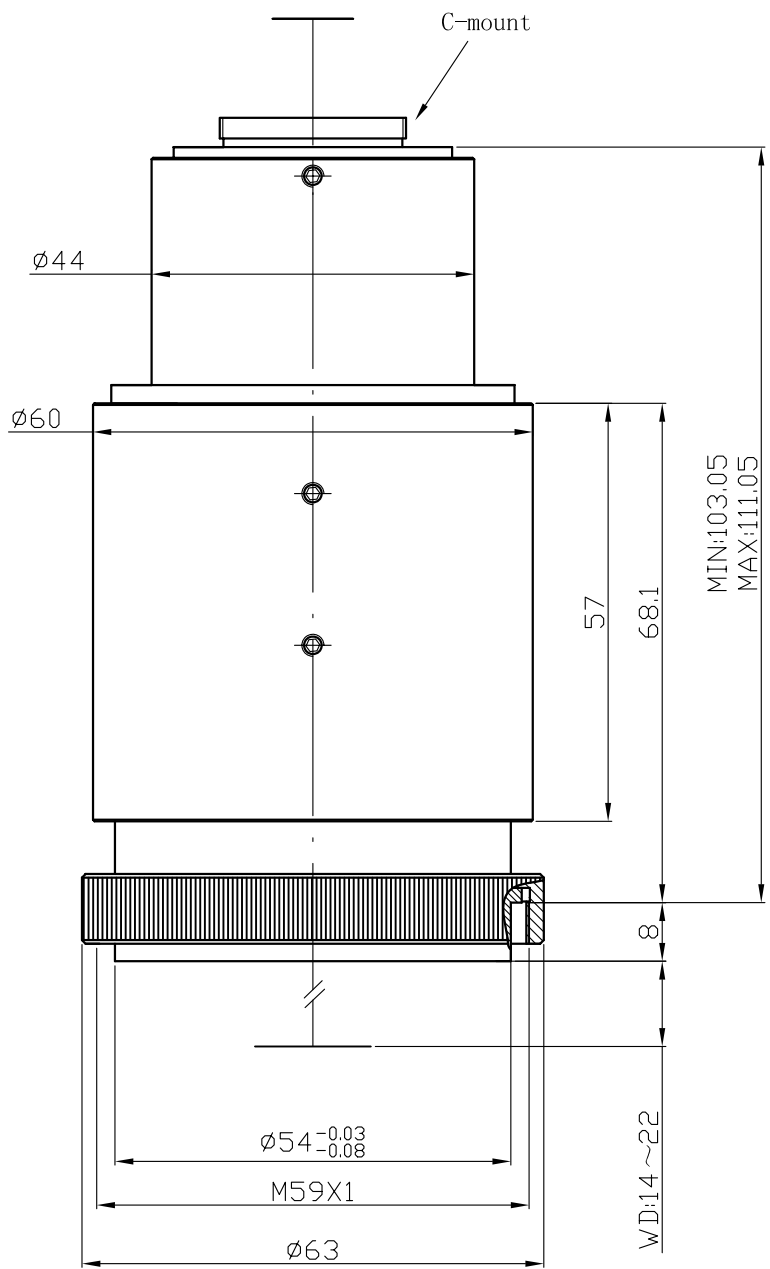
Working Distance  
14-22mm

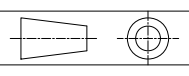
Resolution  
7.14 $\mu$ m

C-Mount

Code		PMS-05TTC1422
Magnification		0.47X
Field of View	1/4"	6.8mm $\times$ 5.1mm
	1/3"	10.2mm $\times$ 7.7mm
	1/2.5"	12.2mm $\times$ 9.2mm
	1/2.3"	13.1mm $\times$ 9.8mm
	1/2"	13.6mm $\times$ 10.2mm
	1/1.8"	15.2mm $\times$ 11.4mm
	2/3"	18.7mm $\times$ 14.0mm
Working Distance		14mm-22mm
Resolution		7.14 $\mu$ m
F.No.		5
TV Distortion		0.10%
Depth of Field*1		1.81mm
N.A.		0.047
Max.Sensor Size		2/3"
Mount		C型
Illumination		--
Working Temperature		-10 $^{\circ}$ C $\sim$ +50 $^{\circ}$ C

\*1: Theoretical calculating value(based on diameter of defocused spots is 0.04mm),in the reality application, take its 1/2 will gain the best effect.



Unit:mm	Scale	1:1
	Name	PMS-05TTC1422
0.0    inch    1.0	Date	2014.6.10
0.0    mm    25.0	<b>POMEAS</b>	